

BITTNER RACCOON-RESISTANT TREE SWALLOW NESTBOX.

Floor size = 5 x 5 inches.

Depth (top of shelf to floor) = 6 1/2 inches.

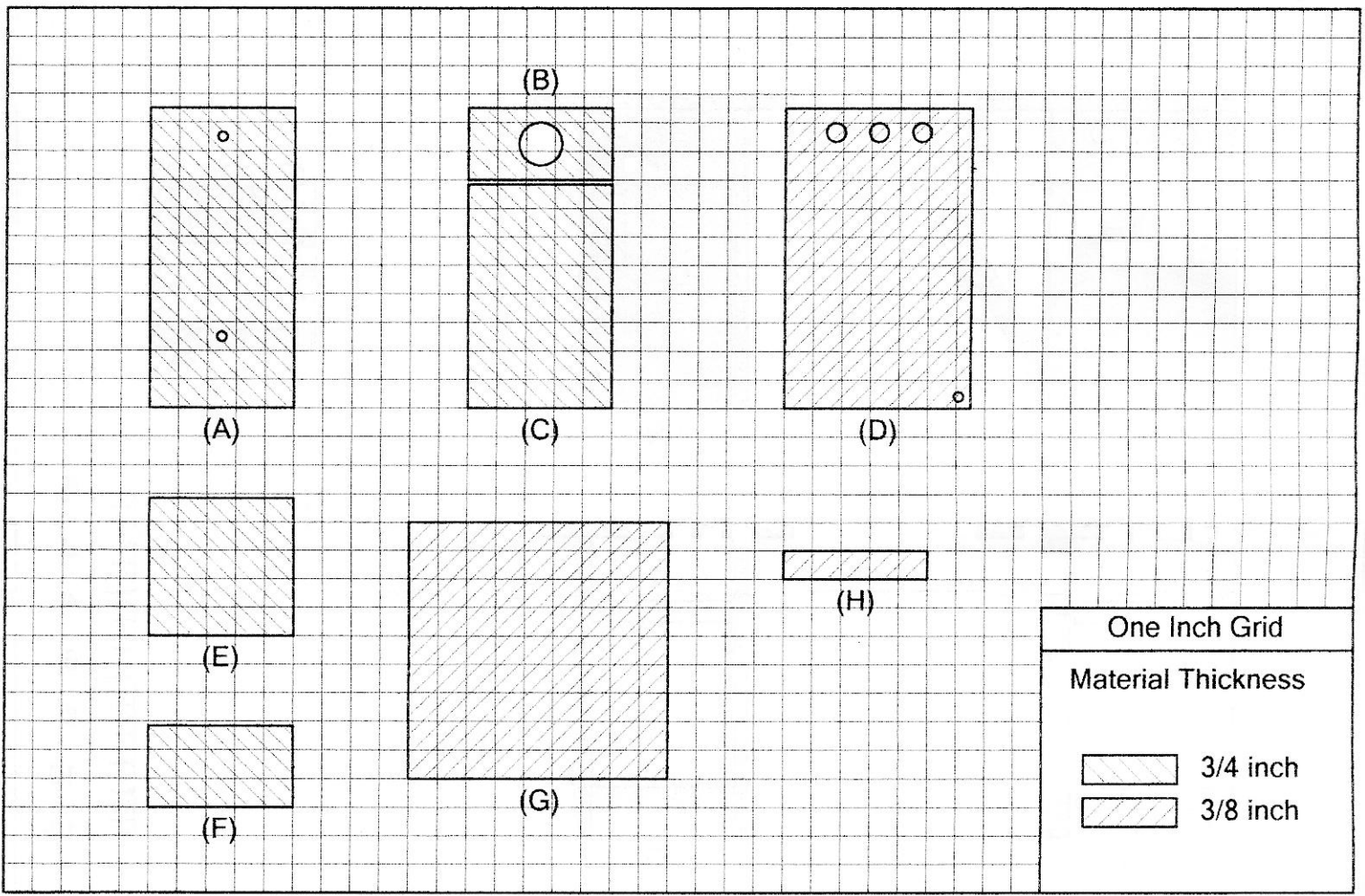
(A) Side view, (B) Front view, (C) Top view without roof,
(D) Side view cross section, (E) Front view cross section.

The entrance is 1 9/16 inch diameter (larger than necessary for swallows). It is based on the recommended size for Mountain Bluebirds, so that bluebirds can use the box if they want. A hole-size option which might be easier for some builders is a 1 1/2 x 1 5/8 inch vertical or horizontal oval, which can be cut with a 1 1/2 inch hole saw. In Eastern Bluebird areas, a 1 1/2 inch hole is satisfactory.

An option for holding the door closed is to use an easily removable double-headed nail through the sidewall and into the edge of the door. A sliding, drop-down door can be substituted to make the box more rain resistant.

The ability of young birds to fledge from a box of this design is not an issue.

The box is attached to a post with two screws. Use a long screwdriver through the entrance hole for the top mounting screw. I drill small pilot holes in the post for the screws.



TREE SWALLOW BOX: Parts List.

(A) Back, (B) Upper Front, (C) Door, (D) Sides(2), (E) Floor, (F) Shelf,
 (G) Roof, (H) Shelf supports/Grab bars(2).

Material: spruce or fir are adequate.

3 feet of 1 x 6 board (3/4 x 5 1/2 inches).

2 square feet of 3/8 plywood.

1 1/2 inch nails & water-resistant glue.

10 x 2 wood screws(2) for mounting.

Main construction steps:

- 1) Attach sides to back.
- 2) Attach sides to floor, shelf and upper front.
- 3) Attach self supports/grab bars (I use glue only).
- 4) Attach roof to back and upper front.
- 5) Install door.